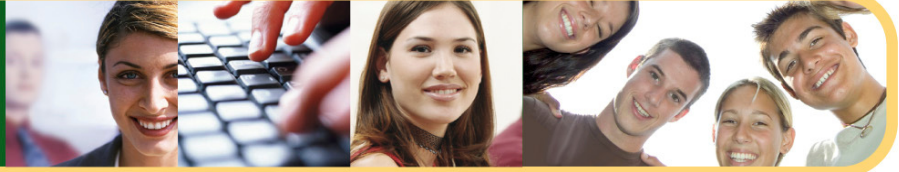


smart people:  
think minerva



## SCOTTISH VOCATIONAL QUALIFICATIONS

### Who needs an SVQ?

Anyone in the workplace. SVQs are work based qualifications for anyone who undertakes a job role. They are open to anyone and there are no entry requirements necessary.

### What is the purpose of an SVQ?

SVQs give recognition of the skills and competencies of anyone in the workplace. Different levels provide the individual with a learning opportunity to demonstrate their knowledge and skill whilst developing themselves on the career ladder. SVQ units encompass a wide range of related work topics.

### What are the benefits of an SVQ?

#### An employee will benefit by

- Having more understanding of their responsibilities
- An opportunity to develop new skills
- Accreditation of current skills

#### An employer will benefit by

- More developed staff giving better performance
- More staff motivation
- Better service to clients

www.minervapeople.co.uk

Queensberry House  
147 High Street  
Dumfries DG1 2QT  
Tel/Fax: 01387 248 244  
e: info@minervapeople.co.uk

## Children's Care, Learning and Development – Level 2

To achieve the SVQ level 2, candidates must complete the **six** mandatory units, and any **one** optional unit.

### Mandatory Units

#### Contribute to positive relationships

1. Interact with and respond to children
2. Interact with and respond to adults
3. Communicate with children
4. Communicate with adults

#### Help to keep children safe

1. Prepare and maintain a safe and healthy environment
2. Follow procedures for accidents, emergencies and illness
3. Support the safeguarding of children from abuse
4. Encourage children's positive behaviour

#### Support children's development

1. Contribute to supporting children's physical development and skills
2. Contribute to supporting children's emotional and social development
3. Contribute to supporting children's communication and intellectual development
4. Contribute to planning for children's development needs

#### Use support to develop own practice in children's care, learning and development

1. Make use of support systems to develop your practice
2. Use new knowledge and skills to improve your practice

#### Prepare and maintain environments to meet children's needs

1. Prepare and maintain the physical environment
2. Prepare and maintain a stimulating environment
3. Maintain an environment that builds children's confidence
4. Support routines for children

#### Support children's play and learning

1. Participate in activities to encourage communication and language
2. Provide opportunities for children's drama and imaginative play
3. Encourage children to be creative
4. Support physical play and exercise
5. Encourage children to explore and investigate

### Optional Units

#### Contribute to the effectiveness of teams

1. Agree and carry out your role and responsibilities within the team
2. Participate effectively as a team member

#### Support the development of babies and children under 3 years

1. Observe babies or children under 3 years as part of your everyday work
2. Provide safe physical care for babies and children under 3 years
3. Provide play activities that encourage learning and development
4. Communicate with, respond to and interpret the needs of babies or children under 3 years

#### Support a child with disabilities or special educational needs

1. Support a child with disabilities or special educational needs by providing care and encouragement
2. Provide support to enable the child to participate in activities and experiences
3. Support the child and family according to the procedures of the setting

#### Support children and young people's play

1. Create a range of environments for children and young people's play
2. Offer a range of play opportunities to children and young people
3. Support children and young people's rights and choices in play
4. End play sessions